



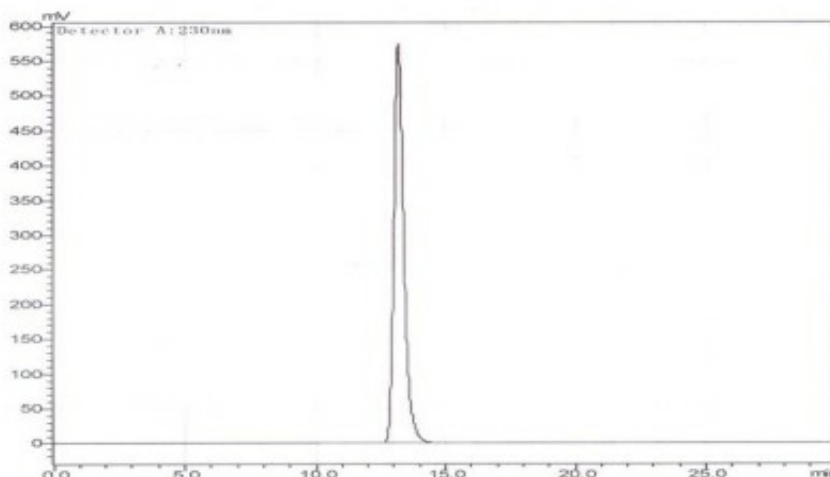
# Brefeldin A PRODUCT DATA SHEET

issue date 12/10/2019

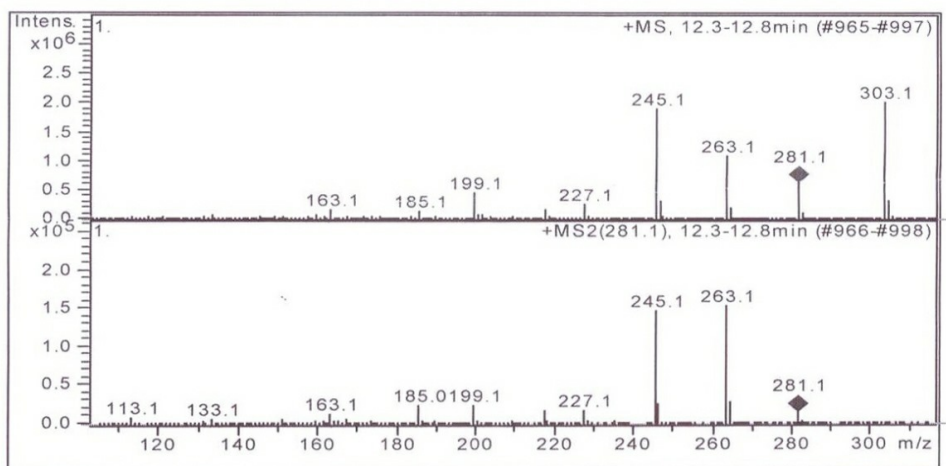
<b>Product Name:</b>	Brefeldin A
<b>Product Number:</b>	B012
<b>CAS Number:</b>	20350-15-6
<b>Molecular Formula:</b>	$C_{16}H_{24}O_4$
<b>Molecular Weight:</b>	280.36
<b>Form:</b>	Powder
<b>Appearance:</b>	White or almost white powder
<b>Solubility:</b>	Acetone: Soluble DMSO: Soluble Ethanol: Soluble Methanol: 10 mg/mL, Clear and colorless or light yellow solution Water: Insoluble
<b>Source:</b>	<i>Penicillium brefeldianum</i>
<b>Storage Conditions:</b>	2-8°C
<b>Description:</b>	<p>Brefeldin A is a mammalian and plant cell antibiotic involved in protein transport inhibition and tumor apoptosis.</p> <p>This product is considered a dangerous good. Quantities above 1 g may be subject to additional shipping fees. Please contact us for specific questions.</p>
<b>Mechanism of Action:</b>	Brefeldin A inhibits protein transport by preventing accumulation of COPI proteins on the Golgi apparatus which facilitate vesicle fusion from the endoplasmic reticulum (ER). By preventing Golgi-COPI protein function, vesicles from the ER cannot properly fuse with the Golgi to be secreted to destined locations.
<b>Cancer Applications</b>	Brefeldin A has demonstrated anti-cancer properties by inducing apoptosis in leukemia and colon carcinoma cells.

**Technical Data:**

**HPLC Chromatogram Showing Ultra High, Single Fraction Purity of Brefeldin A, EvoPure®**



**Mass Spectrometry Results of Brefeldin A**



**References:**

Nebenführ, Andreas, et al. "Brefeldin A: Deciphering an Enigmatic Inhibitor of Secretion." *American Society of Plant Biologists* 130.3 (2002): 1102-108. [Plantphysiol.org](http://Plantphysiol.org). Nov. 2002. Web. 29 Oct. 2012.

Shao, R. G. "Brefeldin A Is a Potent Inducer of Apoptosis in Human Cancer Cells Independently of P53." *Experimental Cell Research* 15.227 (1996): 190-96. [Ncbi.gov](http://Ncbi.gov). Web. 18 Sept. 2012.

If you need any help, contact us: [info@toku-e.com](mailto:info@toku-e.com). Find more information on: [www.toku-e.com/](http://www.toku-e.com/)